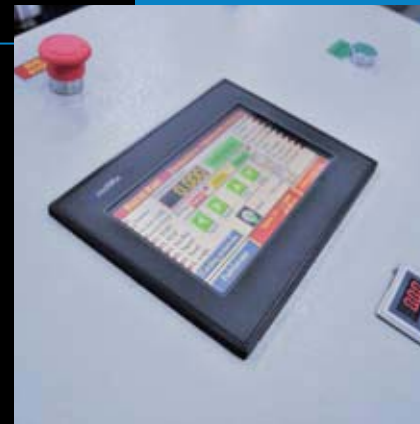


# LINIJA ZA IZRADU OLUKA

## GUTTER LINE



### LINIJA ZA IZRADU OLUKA

Linija se sastoji od odmotalice, mašine za profilisanje, makaza ili testere za odsecanje, prihvatnog stola i kontrolnog pulta.

Tehnički parametri:

- Kapacitet odmotalice: 2.000kg;
- Max radna širina: 400mm;
- Unutrašnji prečnik rolne: 480-750mm;
- Pogonska snaga linije: 8,5 kw
- Brzina profilisanja: 20m/min;
- Tolerancija dužine:  $\pm 1$ mm.
- Debljina lima: 0,4-0,7mm;
- Broj stanica: 11-15;
- Prečnik osovina: 45-70mm;
- Materijal alata: 42CrMo4 nitriran na 64HRC;
- Materijal osovina: 42CrMo4 28 HRC;
- Materijal noževa: X210Cr12 58-60 HRC;
- Vrsta prenosa: lančani prenos;
- Vrsta odsecanja: hidraulične makaze ili kružna testera;
- Kontrola procesa: PLC EMERSON CONTROL TECHNIQUES.

### GUTTER LINE

The line is consist from decoiler,rollforming machine, cutting shear or saw,drop table and operation control panel.

Technical parameters:

- Capacity of decoiler: 2.000kg;
- Max sheet width: 400mm;
- Internal diameter of roll: 480-750mm;
- Power input of line: 8,5KW;
- Speed: 20 m/min;
- Longitudal cutoff tolerance:  $\pm 1$ mm;
- Sheet thickness: 0,4-0,7mm;
- Number of stations: 11-15;
- Diametar of working shafts:45-70mm;
- Material of tools: 42CrMo4 nitriding 64HRC;
- Material of working shafts: 42CrMo4 28 HRC;
- Material of blades: X210Cr12 58-60 HRC;
- Power transmission: chains system;
- Type of cutting: hydraulic shear or circular saw;
- Operation Control Panel: PLC EMERSON CONTROL TECHNIQUES.

O 92x65	s=0,4-0,55mm (čelični pocinkovani,plastificirani) s=0,5-0,7mm (Al neobojeni i obojeni) s=0,55mm (Cu)		O 110x91	s=0,4-0,55mm (čelični pocinkovani,plastificirani) s=0,5-0,7mm (Al neobojeni i obojeni) s=0,55mm (Cu)	
O 100 O 120	s=0,4-0,55mm (čelični pocinkovani,plastificirani) s=0,5-0,7mm (Al neobojeni i obojeni) s=0,55mm (Cu)	D=100 D=120 	O 80	s=0,4-0,55mm (čelični pocinkovani,plastificirani) s=0,5-0,7mm (Al neobojeni i obojeni) s=0,55mm (Cu)	